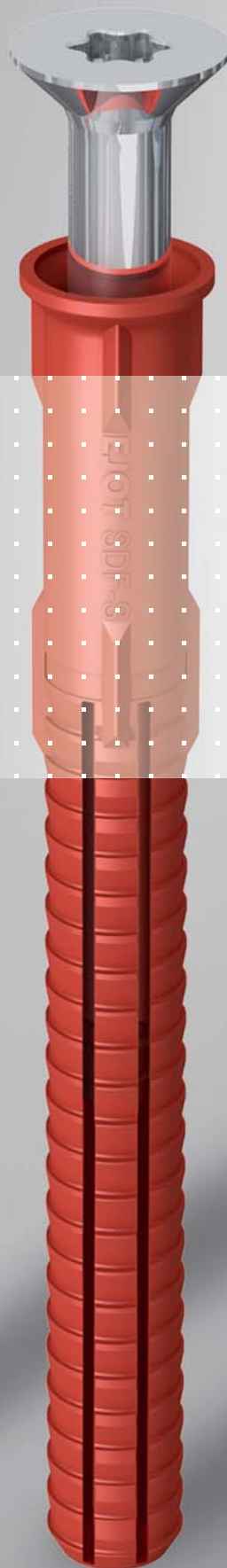
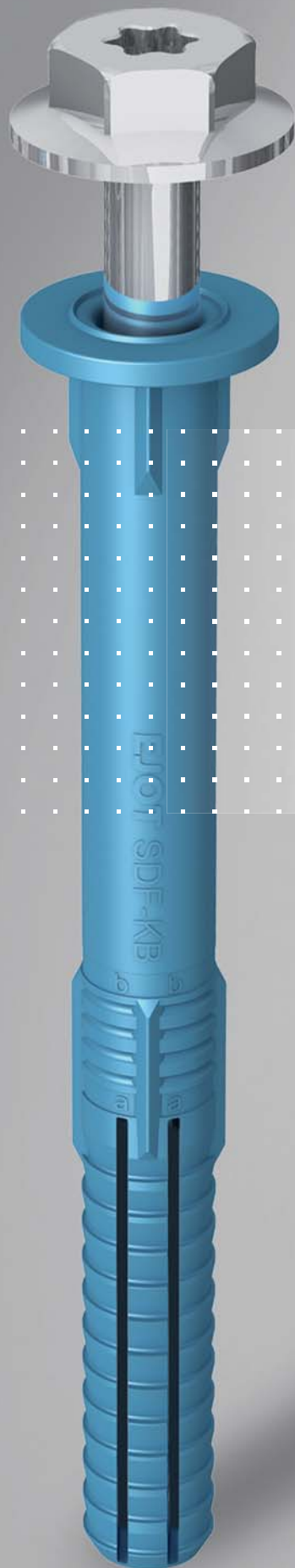


# EJOT®

## EJOT SDF-10V EJOT SDF-10H

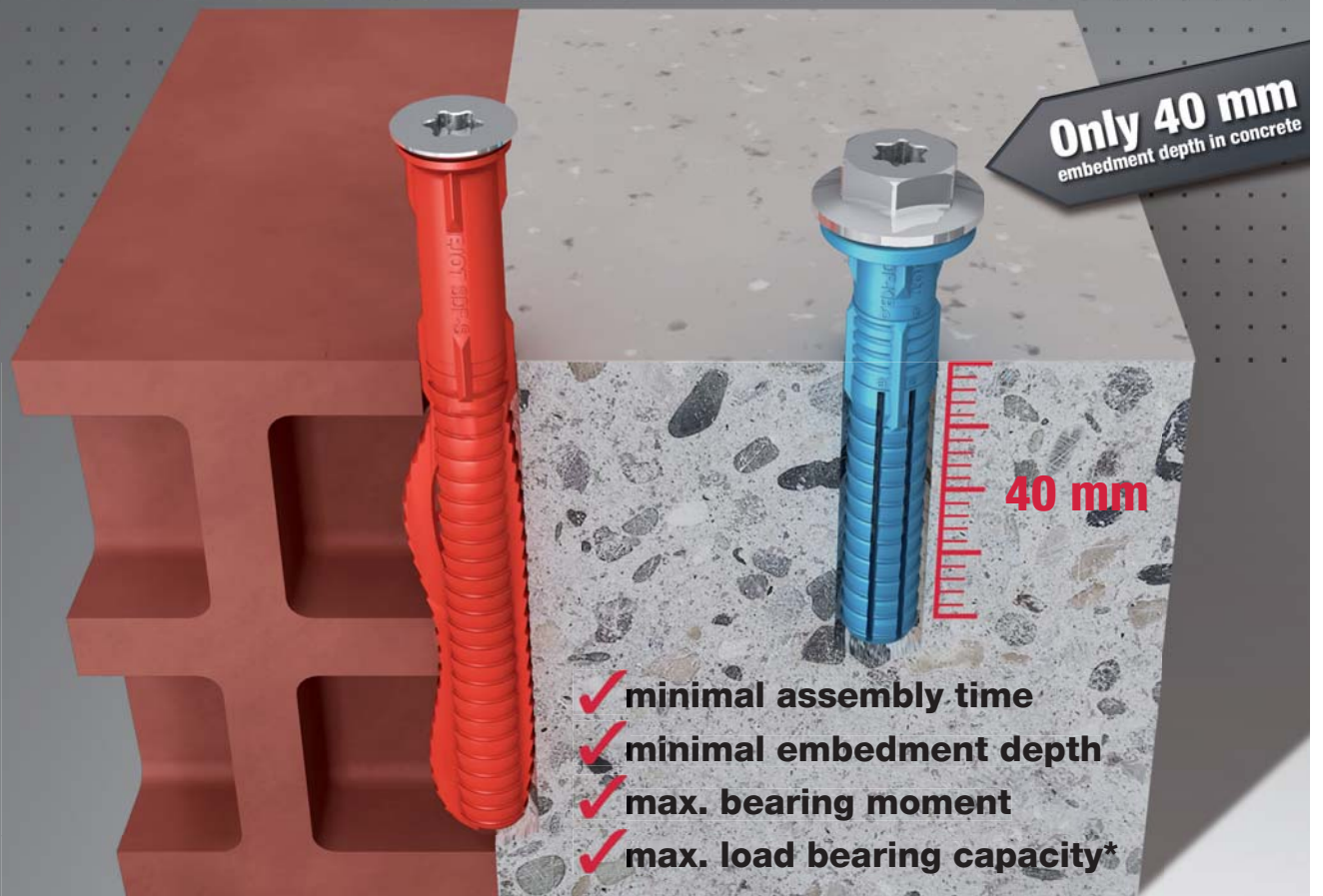
The New SDF Facade  
Anchor Generation  
with ETA Approval



EJOT® The Quality Connection

# *(R)evolution in concrete*

*The new generation of SDF facade anchors*



\*Anchor with radial expansion



EJOT Baubefestigungen GmbH  
In der Stockwiese 35  
D-57334 Bad Laasphe  
phone +49 2752 908-0  
e-mail: bau@ejot.de  
www.ejot.com

[www.ejot.com](http://www.ejot.com)



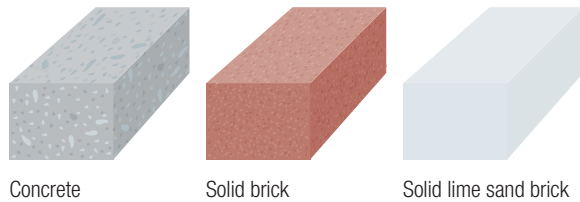
# EJOT®

## The new EJOT SDF-10V facade anchor V = Vollstein (Solid Brick)

The most important product features at a glance



- 1 Screw with hexagon head drive and integrated internal drive T40 for tight components and washer for optimum load-transmission.
- 2 Collar flange for thermal separation between screw and attachment as well as seal ring to prevent moisture penetration.
- 3 Anchor with 2 setting depths  
3a = embedment depth  $\geq 40$  mm in concrete  
3b = embedment depth  $\geq 50$  mm in masonry
- 4 Screw with very short thread enables large side load.
- 5 Double safety lock against torsion for secure assembly
- 6 Radially expanding for consistent expansion

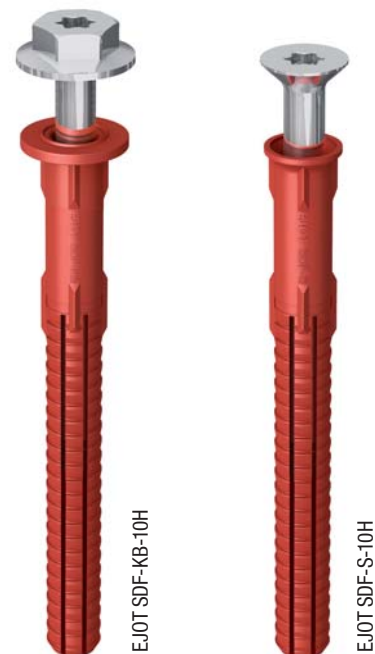
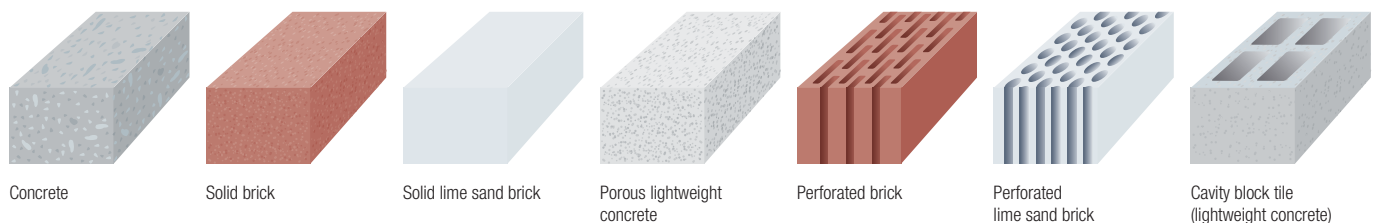


## The new EJOT SDF-10H facade anchor H = Hollow Brick

The most important product features at a glance



- 1 Countersunk head screw with internal drive T40
- 2 Double safety lock against torsion for secure assembly
- 3 Radially expanding for consistent and optimal expansion for all perforated building materials
- 4 Screw with two-tier thread for high side load



**EJOT®**  
**Facade anchor SDF-S-10V**

with countersunk head

**TECHNICAL DATA**

Hole depth in concrete  $h_{1,1}$  .....  $\geq 50$  mm  
 Effective embedment depth in concrete  $h_{nom,1}$  .....  $\geq 40$  mm  
 Hole depth in masonry  $h_{1,2}$  .....  $\geq 60$  mm  
 Effective embedment depth in masonry  $h_{nom,2}$  .....  $\geq 50$  mm  
 Drill-hole diameter  $d_0$  ..... 10 mm  
 Hole diameter of construction part to be installed

**CHARACTERISTIC VALUES**

Tensile load  $N_{Rk,p}$  in concrete C12/15  
 Temperature range 30 °C / 50 °C ..... 4,50 kN  
 Temperature range 50 °C / 80 °C ..... 4,00 kN  
 Transverse load  $V_{Rk,s}$  in concrete C12/15 at  $h_{nom,1} = 40$  mm  
 Anchor with steel screw ..... 7,93 kN  
 Anchor with stainless steel screw A4 ..... 9,12 kN  
 Transverse load  $V_{Rk,s}$  at  $h_{nom,2} = 50$  mm  
 Anchor with steel screw ..... 11,09 kN  
 Anchor with stainless steel screw A4 ..... 12,94 kN  
 Side load  $M_{Rk,s}$  at  $h_{nom,1} = 40$  mm  
 Anchor with steel screw ..... 13,80 Nm  
 Anchor with stainless steel screw A4 ..... 16,09 Nm  
 Side load  $M_{Rk,s}$  at  $h_{nom,2} = 50$  mm  
 Anchor with steel screw ..... 23,01 Nm  
 Anchor with stainless steel screw A4 ..... 26,62 Nm  
 $F_{Rk}$  brick Mz 20-1,8, NF ..... 2,50 kN  
 $F_{Rk}$  solid lime sand brick KS 36, NF ..... 4,00 kN  
 $F_{Rk}$  solid lime sand brick KS 20, 8 DF ..... 4,50 kN

**PERMITTED LOAD\***

Tensile load  $N_{per}$  in concrete C12/15  
 Temperature range 30 °C / 50 °C ..... 1,79 kN  
 Temperature range 50 °C / 80 °C ..... 1,59 kN  
 Transverse load  $V_{per}$  in concrete C12/15 at  $h_{nom,1} = 40$  mm  
 Anchor with steel screw ..... 4,53 kN  
 Anchor with stainless steel screw A4 ..... 4,18 kN  
 Transverse load  $V_{per}$  at  $h_{nom,2} = 50$  mm  
 Anchor with steel screw ..... 6,34 kN  
 Anchor with stainless steel screw A4 ..... 5,92 kN  
 Max. permitted side load  $h_{nom,1} = 40$  mm  
 Anchor with steel screw ..... 7,89 Nm  
 Anchor with stainless steel screw A4 ..... 7,37 Nm  
 Max. permitted side load at  $h_{nom,2} = 50$  mm  
 Anchor with steel screw ..... 13,15 Nm  
 Anchor with stainless steel screw A4 ..... 12,19 Nm  
 Brick Mz 20-1,8, NF ..... 0,71 kN  
 Solid lime sand brick KS 36, NF ..... 1,14 kN  
 Solid lime sand brick KS 20, 8 DF ..... 1,29 kN

**NOTES**

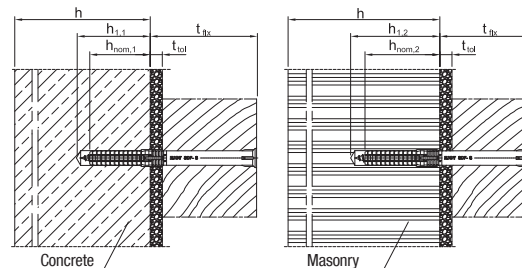
Please note the European Technical Approval ETA-10/0305 in your planning and in the processing of the products. Further information about parameters and loads can be found in the approval.

\*For the calculation of the acceptable loading the material safety value  $\gamma_M$  and the factoral load  $\gamma_F = 1,4$  were included.



**APPLICATION RANGE <sup>A</sup>**

- Installation of wood or metal components
- for all non-load carrying redundant systems according to ETAG 020
- suitable for the structural fastening of gates, doors, windows, square timber



**APPROVAL**

ETA-10/0305



**DRIVE**

Internal drive T40



Ø in mm	Anchor length L mm	Embedment thickness $t_{ix}$ (concrete) ≤ mm	Embedment thickness $t_{ix}$ (masonry) ≤ mm	PU	Price € / 100 pcs.	Order description	Item number
<b>Anchor with steel screw with zinc-plated Cr(VI)-free coating (-V)</b>							
10	50	10	—	100	47.00	<b>SDF-S-10Vx50-V</b>	8580050450
10	60	20	10	100	53.00	<b>SDF-S-10Vx60-V</b>	8580060450
10	70	30	20	100	55.00	<b>SDF-S-10Vx70-V</b>	8580070450
10	80	40	30	100	60.00	<b>SDF-S-10Vx80-V</b>	8580080450
10	100	60	50	100	64.00	<b>SDF-S-10Vx100-V</b>	8580100450
10	120	80	70	100	74.00	<b>SDF-S-10Vx120-V</b>	8580120450
10	140	100	90	100	84.00	<b>SDF-S-10Vx140-V</b>	8580140450
10	160	120	110	100	116.00	<b>SDF-S-10Vx160-V</b>	8580160450
10	180	140	130	100	189.00	<b>SDF-S-10Vx180-V</b>	8580180450
10	200	160	150	100	215.00	<b>SDF-S-10Vx200-V</b>	8580200450
10	220	180	170	100	254.00	<b>SDF-S-10Vx220-V</b>	8580220450

**FEATURES**

- anchor with an embedment depth of only 40 mm in concrete
- two installation depths (embedment in masonry 50 mm)
- very short expansion part, for short installation times
- optimum expanding part due to radial expansion
- very high side loads
- Cr VI-free coating of the screw
- product identification through different sleeve colours
- double safety lock against torsion for secure installation

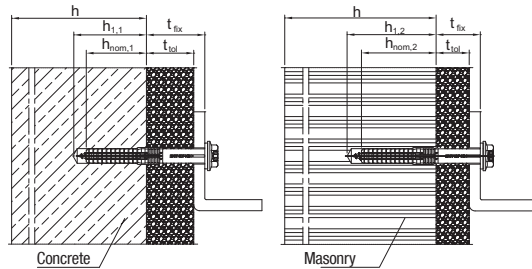
**INSTALLATION SUBSTRATE**

- Approved for:
- concrete
  - solid brick
  - solid lime sand brick
  - solid lightweight concrete bricks
- suitable for:
- natural stone with compact structure
  - plaster board



**APPLICATION RANGE** B

- Installation of metal components
- for all non-load carrying redundant systems according to ETAG 020
- suitable for the structural fastening of wall cupboards, cladding, metal angle pieces



**APPROVAL**  
ETA-10/0305



**DRIVE**  
Internal drive T40  
Hexagon head A/F13



**EJOT®**  
**Facade anchor SDF-KB-10V**

with hexagon head

**TECHNICAL DATA**

- Hole depth in concrete  $h_{1,1}$  .....  $\geq 50$  mm
- Effective embedment depth in concrete  $h_{nom,1}$  .....  $\geq 40$  mm
- Hole depth in masonry  $h_{1,2}$  .....  $\geq 60$  mm
- Effective embedment depth in masonry  $h_{nom,2}$  .....  $\geq 50$  mm
- Drill-hole diameter  $d_0$  ..... 10 mm
- Hole diameter of construction part to be installed

**CHARACTERISTIC VALUES**

- Tensile load  $N_{Rk,p}$  in concrete C12/15
  - Temperature range 30 °C / 50 °C ..... 4,50 kN
  - Temperature range 50 °C / 80 °C ..... 4,00 kN
- Transverse load  $V_{Rk,s}$  in concrete C12/15 at  $h_{nom,1} = 40$  mm
  - Anchor with steel screw ..... 7,93 kN
  - Anchor with stainless steel screw A4 ..... 9,12 kN
- Transverse load  $V_{Rk,s}$  at  $h_{nom,2} = 50$  mm
  - Anchor with steel screw ..... 11,09 kN
  - Anchor with stainless steel screw A4 ..... 12,94 kN
- Side load  $M_{Rk,s}$  at  $h_{nom,1} = 40$  mm
  - Anchor with steel screw ..... 13,80 Nm
  - Anchor with stainless steel screw A4 ..... 16,09 Nm
- Side load  $M_{Rk,s}$  at  $h_{nom,2} = 50$  mm
  - Anchor with steel screw ..... 23,01 Nm
  - Anchor with stainless steel screw A4 ..... 26,62 Nm
- $F_{Rk}$  brick Mz 20-1,8, NF ..... 2,50 kN
- $F_{Rk}$  solid lime sand brick KS 36, NF ..... 4,00 kN
- $F_{Rk}$  solid lime sand brick KS 20, 8 DF ..... 4,50 kN

**PERMITTED LOAD\***

- Tensile load  $N_{per}$  in concrete C12/15
  - Temperature range 30 °C / 50 °C ..... 1,79 kN
  - Temperature range 50 °C / 80 °C ..... 1,59 kN
- Transverse load  $V_{per}$  in concrete C12/15 at  $h_{nom,1} = 40$  mm
  - Anchor with steel screw ..... 4,53 kN
  - Anchor with stainless steel screw A4 ..... 4,18 kN
- Transverse load  $V_{per}$  at  $h_{nom,2} = 50$  mm
  - Anchor with steel screw ..... 6,34 kN
  - Anchor with stainless steel screw A4 ..... 5,92 kN
- Max. permitted side load  $h_{nom,1} = 40$  mm
  - Anchor with steel screw ..... 7,89 Nm
  - Anchor with stainless steel screw A4 ..... 7,37 Nm
- Max. permitted side load at  $h_{nom,2} = 50$  mm
  - Anchor with steel screw ..... 13,15 Nm
  - Anchor with stainless steel screw A4 ..... 12,19 Nm
- Brick Mz 20-1,8, NF ..... 0,71 kN
- Solid lime sand brick KS 36, NF ..... 1,14 kN
- Solid lime sand brick KS 20, 8 DF ..... 1,29 kN

**NOTES**

Please note the European Technical Approval ETA-10/0305 in your planning and in the processing of the products. Further information about parameters and loads can be found in the approval.

\*For the calculation of the acceptable loading the material safety value  $\gamma_M$  and the factoral load  $\gamma_F = 1,4$  were included.

Ø in mm	Anchor length L mm	Embedment thickness $t_{fix}$ (concrete) ≤ mm	Embedment thickness $t_{fix}$ (masonry) ≤ mm	PU	Price € / 100 pcs.	Order description	Item number
<b>Anchor with steel screw with zinc-plated Cr(VI)-free coating (-V)</b>							
10	50	10	–	100	54.00	SDF-KB-10Vx50-V	8581050450
10	60	20	10	100	55.00	SDF-KB-10Vx60-V	8581060450
10	70	30	20	100	57.00	SDF-KB-10Vx70-V	8581070450
10	80	40	30	100	62.00	SDF-KB-10Vx80-V	8581080450
10	100	60	50	100	69.00	SDF-KB-10Vx100-V	8581100450
10	120	80	70	100	79.00	SDF-KB-10Vx120-V	8581120450
10	140	100	90	100	99.00	SDF-KB-10Vx140-V	8581140450
10	160	120	110	100	120.00	SDF-KB-10Vx160-V	8581160450
10	180	140	130	100	195.00	SDF-KB-10Vx180-V	8581180450
10	200	160	150	100	229.00	SDF-KB-10Vx200-V	8581200450
10	220	180	170	100	262.00	SDF-KB-10Vx220-V	8581220450
<b>Anchor with stainless steel screws A4 (-E)</b>							
10	50	10	–	100	149.00	SDF-KB-10Vx50-E	8581050650
10	60	20	10	100	165.00	SDF-KB-10Vx60-E	8581060650
10	70	30	20	100	184.00	SDF-KB-10Vx70-E	8581070650

**FEATURES**

- anchor with an embedment depth of only 40 mm in concrete
- two installation depths (embedment in masonry 50 mm)
- very short expansion part, for short installation times
- optimum expanding part due to radial expansion
- very high side loads
- Cr VI-free coating of the screw
- product identification through different sleeve colours
- double safety lock against torsion for secure installation

**INSTALLATION SUBSTRATE**

- Approved for:
- concrete
  - solid brick
  - solid lime sand brick
  - solid lightweight concrete bricks
- suitable for:
- natural stone with compact structure
  - plaster board

**EJOT®  
Facade anchor SDF-S-10H**

with countersunk head

**TECHNICAL DATA**

Hole depth  $h_1$  .....  $\geq 80$  mm  
 Effective embedment depth  $h_{nom}$  .....  $\geq 70$  mm  
 Drill-hole diameter  $d_0$  ..... = 10 mm  
 Hole diameter of construction part to be installed

**CHARACTERISTIC VALUES**

Tensile load  $N_{Rk,D}$  in concrete C12/15  
 Temperature range 30 °C / 50 °C ..... 4,50 kN  
 Temperature range 50 °C / 80 °C ..... 4,00 kN  
 transverse load  $V_{Rk,S}$   
 Anchor with steel screw ..... 9,35 kN  
 Anchor with stainless steel screw A4 ..... 10,91 kN  
 Side load  $M_{Rk,S}$   
 Anchor with steel screw ..... 17,67 Nm  
 Anchor with stainless steel screw A4 ..... 20,62 Nm  
 Brick Mz 20-1,8, NF ..... 4,00 kN  
 Solid lime sand brick KS 36, NF ..... 4,50 kN  
 Solid lime sand brick KS 20, 8 DF ..... 4,50 kN  
 Solid lightweight concrete brick V6, 2 DF ..... 2,00 kN  
 Porous lightweight concrete ..... 2,00 kN  
 Vertically perforated brick HLz 12-0,9, NF ..... 2,00 kN  
 Perforated lime sand brick KSL 12, 4 DF ..... 2,50 kN  
 Cavity block tile made of lightweight concrete  
 Hbl 10, 12 DF ..... 1,20 kN

**PERMITTED LOAD\***

Tensile load  $N_{per}$  in concrete C12/15  
 Temperature range 30 °C / 50 °C ..... 1,79 kN  
 Temperature range 50 °C / 80 °C ..... 1,59 kN  
 Transverse load  $V_{zul}$   
 Anchor with steel screw ..... 5,34 kN  
 Anchor with stainless steel screw A4 ..... 5,00 kN  
 Max. permitted side load  
 Anchor with steel screw ..... 10,10 Nm  
 Anchor with stainless steel screw A4 ..... 9,44 Nm  
 Brick Mz 20-1,8, NF ..... 1,14 kN  
 Solid lime sand brick KS 36, NF ..... 1,29 kN  
 Solid lime sand brick KS 20, 8 DF ..... 1,29 kN  
 Solid lightweight concrete brick V6, 2 DF ..... 0,57 kN  
 Porous lightweight concrete ..... 0,57 kN  
 Vertically perforated brick HLz 12-0,9, NF ..... 0,57 kN  
 Perforated lime sand brick KSL 12, 4 DF ..... 0,71 kN  
 Cavity block tile made of lightweight concrete  
 Hbl 10, 12 DF ..... 0,34 kN

**NOTES**

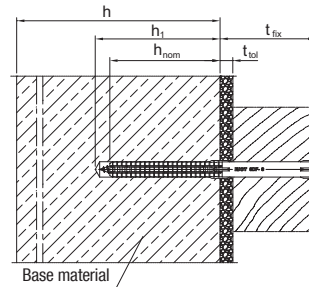
Please note the European Technical Approval ETA-10/0305 in your planning and in the processing of the products. Further information about parameters and loads can be found in the approval.

\*For the calculation of the acceptable loading the material safety value  $\gamma_m$  and the factoral load  $\gamma_f = 1,4$  were included.



**APPLICATION RANGE** A

- Installation of wood or metal components
- for all non-load carrying redundant systems according to ETAG 020
- suitable for the structural fastening of gates, doors, windows, square timber



**APPROVAL**  
ETA-10/0305



**DRIVE**

Internal drive T40



Ø in mm	Anchor length L mm	Embedment thickness $t_{fix}$ ≤ mm	PU	Price € / 100 pcs.	Order description	Item number
<b>Anchor with steel screw with zinc-plated Cr(VI)-free coating (-V)</b>						
10	80	10	100	55.00	SDF-S-10Hx80-V	8510080420
10	100	30	100	65.00	SDF-S-10Hx100-V	8510100420
10	120	50	100	73.00	SDF-S-10Hx120-V	8510120420
10	140	70	100	84.00	SDF-S-10Hx140-V	8510140420
10	160	90	100	97.00	SDF-S-10Hx160-V	8510160420
10	180	110	100	145.00	SDF-S-10Hx180-V	8510180420
10	200	130	100	213.00	SDF-S-10Hx200-V	8510200420
10	220	150	100	258.00	SDF-S-10Hx220-V	8510220420
<b>Anchor with stainless steel screws A4 (-E)</b>						
10	80	10	100	167.00	SDF-S-10Hx80-E	8510080620
10	100	30	100	198.00	SDF-S-10Hx100-E	8510100620
10	120	50	100	239.00	SDF-S-10Hx120-E	8510120620
10	140	70	100	284.00	SDF-S-10Hx140-E	8510140620
10	160	90	100	344.00	SDF-S-10Hx160-E	8510160620
10	180	110	100	429.00	SDF-S-10Hx180-E	8510180620
10	200	130	100	518.00	SDF-S-10Hx200-E	8510200620
10	220	150	100	583.00	SDF-S-10Hx220-E	8510220620

**FEATURES**

- approved for all common building materials
- reliable installation in problematic building material due to optimised expansion part
- secure hold due to radial expansion
- Cr VI-free coating of the screw
- product identification through different sleeve colours
- double safety lock against torsion for secure installation

**INSTALLATION SUBSTRATE**

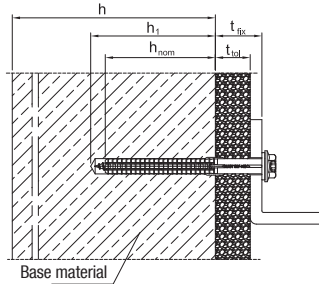
Approved for:

- concrete
  - solid brick
  - solid lime sand brick
  - solid lightweight concrete bricks
  - vertically perforated bricks
  - lightweight vertically perforated bricks
  - perforated lime sand brick
  - lightweight concrete cavity block
  - porous lightweight concrete
- suitable for:
- natural stone
  - plaster board
  - non-classified cavity and perforated brick



**APPLICATION RANGE** B

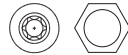
- Installation of metal components
- for all non-load carrying redundant systems according to ETAG 020
- suitable for the structural fastening of wall cupboards, cladding, metal angle pieces



**APPROVAL**  
ETA-10/0305



**DRIVE**  
Internal drive T40  
Hexagon head AVF13



**EJOT®**  
**Facade anchor SDF-KB-10H**

with hexagon head

**TECHNICAL DATA**

Hole depth  $h_1$  .....  $\geq 80$  mm  
 Effective embedment depth  $h_{nom}$  .....  $\geq 70$  mm  
 Drill-hole diameter  $d_0$  ..... = 10 mm  
 Hole diameter of construction part to be installed

**CHARACTERISTIC VALUES**

Tensile load  $N_{Rk,D}$  in concrete C12/15  
 Temperature range 30 °C / 50 °C ..... 4,50 kN  
 Temperature range 50 °C / 80 °C ..... 4,00 kN  
 transverse load  $V_{Rk,S}$   
 Anchor with steel screw ..... 9,35 kN  
 Anchor with stainless steel screw A4 ..... 10,91 kN  
 Side load  $M_{Rk,S}$   
 Anchor with steel screw ..... 17,67 Nm  
 Anchor with stainless steel screw A4 ..... 20,62 Nm  
 Brick Mz 20-1,8, NF ..... 4,00 kN  
 Solid lime sand brick KS 36, NF ..... 4,50 kN  
 Solid lime sand brick KS 20, 8 DF ..... 4,50 kN  
 Solid lightweight concrete brick V6, 2 DF ..... 2,00 kN  
 Porous lightweight concrete ..... 2,00 kN  
 Vertically perforated brick HLz 12-0,9, NF ..... 2,00 kN  
 Perforated lime sand brick KSL 12, 4 DF ..... 2,50 kN  
 Cavity block tile made of lightweight concrete  
 Hbl 10, 12 DF ..... 1,20 kN

**PERMITTED LOAD\***

Tensile load  $N_{per}$  in concrete C12/15  
 Temperature range 30 °C / 50 °C ..... 1,79 kN  
 Temperature range 50 °C / 80 °C ..... 1,59 kN  
 Transverse load  $V_{zul}$   
 Anchor with steel screw ..... 5,34 kN  
 Anchor with stainless steel screw A4 ..... 5,00 kN  
 Max. permitted side load  
 Anchor with steel screw ..... 10,10 Nm  
 Anchor with stainless steel screw A4 ..... 9,44 Nm  
 Brick Mz 20-1,8, NF ..... 1,14 kN  
 Solid lime sand brick KS 36, NF ..... 1,29 kN  
 Solid lime sand brick KS 20, 8 DF ..... 1,29 kN  
 Solid lightweight concrete brick V6, 2 DF ..... 0,57 kN  
 Porous lightweight concrete ..... 0,57 kN  
 Vertically perforated brick HLz 12-0,9, NF ..... 0,57 kN  
 Perforated lime sand brick KSL 12, 4 DF ..... 0,71 kN  
 Cavity block tile made of lightweight concrete  
 Hbl 10, 12 DF ..... 0,34 kN

**NOTES**

Please note the European Technical Approval ETA-10/0305 in your planning and in the processing of the products. Further information about parameters and loads can be found in the approval.

\*For the calculation of the acceptable loading the material safety value  $\gamma_M$  and the factoral load  $\gamma_F = 1,4$  were included.

Ø in mm	Anchor length L mm	Embedment thickness $t_{fix} \leq$ mm	PU	Price € / 100 pcs.	Order description	Item number
<b>Anchor with steel screw with zinc-plated Cr(VI)-free coating (-V)</b>						
10	80	10	100	58,00	SDF-KB-10Hx80-V	8513080420
10	100	30	100	69,00	SDF-KB-10Hx100-V	8513100420
10	120	50	100	76,00	SDF-KB-10Hx120-V	8513120420
10	140	70	100	89,00	SDF-KB-10Hx140-V	8513140420
10	160	90	100	105,00	SDF-KB-10Hx160-V	8513160420
10	180	110	100	149,00	SDF-KB-10Hx180-V	8513180420
10	200	130	100	227,00	SDF-KB-10Hx200-V	8513200420
10	220	150	100	266,00	SDF-KB-10Hx220-V	8513220420
<b>Anchor with stainless steel screws A4 (-E)</b>						
10	80	10	100	183,00	SDF-KB-10Hx80-E	8513080620
10	100	30	100	211,00	SDF-KB-10Hx100-E	8513100620
10	120	50	100	254,00	SDF-KB-10Hx120-E	8513120620
10	140	70	100	295,00	SDF-KB-10Hx140-E	8513140620
10	160	90	100	356,00	SDF-KB-10Hx160-E	8513160620
10	180	110	100	446,00	SDF-KB-10Hx180-E	8513180620
10	200	130	100	540,00	SDF-KB-10Hx200-E	8513200620
10	220	150	100	614,00	SDF-KB-10Hx220-E	8513220620

**FEATURES**

- approved for all common building materials
- reliable installation in problematic building material due to optimised expansion part
- secure hold due to radial expansion
- Cr VI-free coating of the screw
- product identification through different sleeve colours
- double safety lock against torsion for secure installation

**INSTALLATION SUBSTRATE**

- Approved for:
- concrete
  - solid brick
  - solid lime sand brick
  - solid lightweight concrete bricks
  - vertically perforated bricks
  - lightweight vertically perforated bricks
  - perforated lime sand brick
  - lightweight concrete cavity block
  - porous lightweight concrete
- suitable for:
- natural stone
  - plaster board
  - non-classified cavity and perforated brick

**Anchor range – product overview**



**Anchor length range with steel screws with zinc-plated Cr(VI)-free coating**

Length [mm]	SDF-S-10V	SDF-KB-10V	SDF-S-10H	SDF-KB-10H	SDF-S-8	SDF-KB-8	SDF-S-10U	SDF-S-14U	SDP-S-10S	SDP-KB-10S	SDP-KB-14
50	•	•									
60	•	•				•					
70	•	•									
80	•	•	•	•	•	•			•	•	•
100	•	•	•	•	•	•			•	•	•
120	•	•	•	•	•	•			•	•	
140	•	•	•	•	•	•			•	•	
160	•	•	•	•	•	•			•	•	
180	•	•	•	•	•	•		•	•	•	
200	•	•	•	•	• <sup>1)</sup>	• <sup>1)</sup>			•	•	
220	•	•	•	•	• <sup>1)</sup>	• <sup>1)</sup>		•	•	•	
250							•				
260								•			
275							•				
300							•	•			
360								•			

<sup>1)</sup> Delivery time upon request

**Anchor length range with A4 stainless steel screws**

Length [mm]	SDF-S-10V	SDF-KB-10V	SDF-S-10H	SDF-KB-10H	SDF-S-8	SDF-KB-8	SDF-S-10U	SDF-S-14U	SDP-S-10S	SDP-KB-10S	SDP-KB-14
50		•									
60		•				•					
70		•									
80			•	•	• <sup>1)</sup>	•			•	•	•
100			•	•	•	•			•	•	•
120			•	•	•	•			•	•	
140			•	•	•	•			•	•	
160			•	•	•	•			•	•	
180			•	•	•	•			•	•	
200			•	•	• <sup>1)</sup>	• <sup>1)</sup>			• <sup>1)</sup>	• <sup>1)</sup>	
220			•	•	• <sup>1)</sup>	• <sup>1)</sup>			• <sup>1)</sup>	• <sup>1)</sup>	

<sup>1)</sup> Delivery time upon request

**Anchor screw head style and type of drive**

Design	SDF-S-10V	SDF-KB-10V	SDF-S-10H	SDF-KB-10H	SDF-S-8	SDF-KB-8	SDF-S-10U	SDF-S-14U	SDP-S-10S	SDP-KB-10S	SDP-KB-14
Countersunk head	•		•		•		•		•		
Hexagon Head		•		•		•		•		•	•
T30					•						
T40	•	•	•	•			•		•		
A/F 10						•					
A/F 13		•		•						•	
A/F 17								•			•



Anchor range – product overview

Approval		ETA-10/0305		Z-21.2-589			Z-21.2-967	
Type of Anchor		SDF-10V	SDF-10H	SDF-8	SDF-10U	SDF-14U	SDP-10S	SDP-14
Nominal drill diameter	$d_{nom} / d_0$ [mm]	10	10	8	10	14	10	14
Maximum drill diameter	$d_{cut}$ [mm] ≤	10.45	10.45	8.45	10.45	14.5	10.45	14.5
Drill hole depth	$h_t / t$ [mm] ≥	50 / 60	80	60	80	80	80	80
Embedment depth (concrete + masonry)	$h_{nom} / h_v$ [mm] ≥	–	70	50	70	70	70	70
Embedment depth (concrete)	$h_{nom,1} / h_v$ [mm] ≥	40	–	–	–	–	–	–
Embedment depth (masonry)	$h_{nom,2} / h_v$ [mm]	50	–	–	–	–	–	–
Hole diameter of construction part to be installed	$d_i$ [mm]	10.5	10.5	8.5	10.5	14.5	10.5	14.5

Building materials	Standard	SDF-10V	SDF-10H	SDF-8	SDF-10U	SDF-14U	SDP-10S	SDP-14
standard concrete	DIN 1045	•	•	•	•	•		
solid brick ≥ Mz 12	DIN 105	•	•	•	•	•		
vertically perforated bricks ≥ Hlz 12	DIN 105-1		•		•	•		
vertically perforated brick LHz <sup>1)</sup>	DIN 105-2		•		•	•		
solid lime sand brick ≥ KS 12	DIN 106	•	•	•	•	•		
perforated lime sand brick ≥ KSL 6	DIN 106		•		•	•		
slag brick <sup>1)</sup>	DIN 398				•	•		
lightweight concrete cavity block ≥ HBL 2	DIN 18151		•		•	•		
solid lightweight concrete bricks	DIN 18152		•	•	•	•		
solid concrete brick <sup>1)</sup>	DIN 18153			•	•	•		
concrete cavity block <sup>1)</sup>	DIN 18153				•	•		
concrete rain screen ≥ C 12/15	DIN 1045	•		•	•			
porous lightweight concrete	TGL		•		•	•		
porous concrete	DIN 1053/DIN 4165						•	•
porous concrete Laubig/Parchim	TGL						•	•

<sup>1)</sup> Generally: pull-out test on the structure

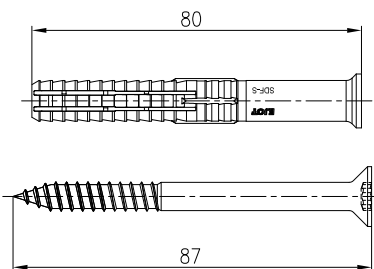
EJOT product key

Example 1:



SDF-S-10Vx80-V

- SDF = facade screw anchor
- S = countersunk head anchor with countersunk head screw
- 10 = anchor diameter in mm
- V = solid brick
- x80 = anchor length in mm
- V = steel screw with Cr(VI)-free surface



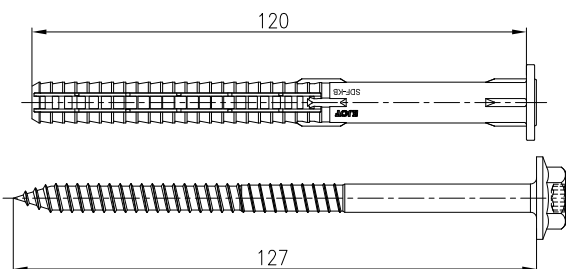
SDF-S Ø10V x 80

Example 2:



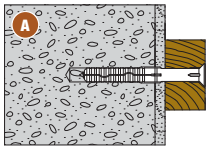
SDF-KB-10Hx120-E

- SDF = facade screw anchor
- KB = collar flange anchor with hexagon screw
- 10 = anchor diameter in mm
- H = hollow brick
- x120 = anchor length in mm
- E = A4 stainless steel screw

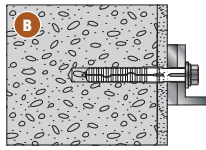


SDF-KB Ø10H x 120

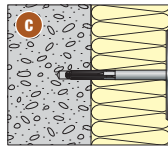
All products from the rear-ventilated facade (VHF) product range\*



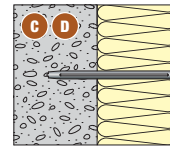
Façade anchor SDF / SDP



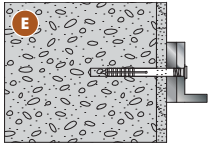
Façade anchor SDF / SDP



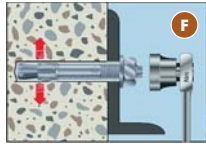
DH insulation support anchor



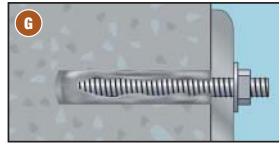
DMH metal insulation support anchor + DMT



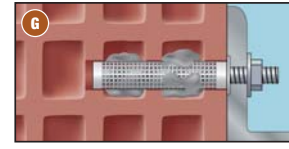
Nail anchor ND



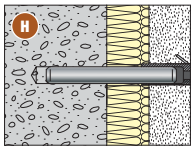
Anchor bolt B / BZ plus



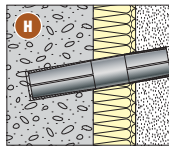
Chemical anchors MIS



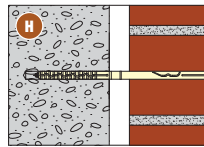
Chemical anchors MIS + SH



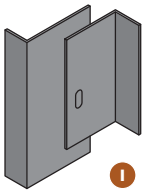
Rain screen anchor WSS



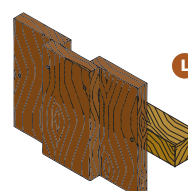
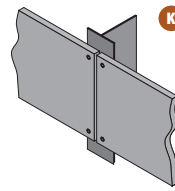
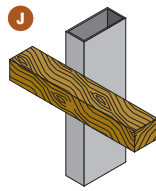
Rain screen anchor KERI





Double expansion wall anchor VSD



Screws and rivet for joints and attachments



\*Excerpt from our poster  
fastening technology for  
roofing and cladding.  
Get the latest poster in DIN  
A1 format or download the  
PDF version: [www.ejot.com](http://www.ejot.com)

Application Range	Surface	Fastening solution	Approval	Tools	
Verankerungen	A Verankerung von Anbauteilen aus Holz	Beton Vollstein	SDF-S-8 SDF-S-10V	Z-21.2-589 ETA-10/0305	 Anchor screwgun 246 Blow-out pump   EJOT Ausblaspumpe
		Beton Vollstein, Lochstein	SDF-S-10U SDF-S-10H SDF-S-14U	Z-21.2-589 ETA-10/0305 Z-21.2-589	
		Porenbeton	SDP-S-10S	Z-21.2-967	
		Beton Vollstein	SDF-KB-8 SDF-KB-10V	Z-21.2-589	
	B Verankerung von Anbauteilen aus Metall	Beton Vollstein, Lochstein	SDF-KB-10H	ETA-10/0305	
		Porenbeton	SDP-KB-10S SDP-KB-14	Z-21.2-967	
			C Befestigung von weichen Dämmstoffen	Beton Vollstein, Lochstein Porenbeton	
	D Befestigung von harten Dämmstoffen	Beton Vollstein, Lochstein Porenbeton		-	
	E Montage von leichten/konstruktiven Befestigungen	Beton Vollstein, Lochstein	Wageldübel ND-K-8	-	
	F Verankerung in Betondruckzone (ungerissen)	Beton	Bolzenanker B	Z-21.1-1589 ETA-01/0013	
	F Verankerung in Betonzugzone (gerissen)	Beton	Bolzenanker BZ plus	ETA-03/0017	
	G Injektionstechnik zur spreizdruckfreien Verankerung	Vollstein, Lochstein	Mörtelkartusche MIS-S 345 (Polyester) + Gewindestangen + Siebhülsen SH	Z-21.3-1815 Z-21.3-1816 ETA-06/0067	
Beton Vollstein, Lochstein		Mörtelkartusche MIS-V 345 (Vinylester) + Gewindestangen+ Siebhülsen SH	ETA-06/0068 ETA-06/0069		
H Verankerungen zur Sanierung von Fassadenelementen	2-schaliges Mauerwerk	VSD	Z-21.2-1652	-	
	3-schichtige Außenwandelemente	WSS	ETA-99/0007	Core drill plate drill jig	
		KERI	Z-21.8-1265		
Verbindungen, Befestigungen	I Aluminiumverbindung mit Gleit- und Festpunkten	Aluminium	JT4-3H/5-5,5x19	P-013611	-
		Aluminium	Blindniet K14-A/E	ETA-10/0200	Nosepiece, Rivet gun
	I Aluminiumverbindung mit Festpunkten	Aluminium	JT4-6/3-5,5x19	-	-
	J Holztragplatten	Aluminium	JT4-S-2-4,8x48	P-013604	-
	K Fassadenbekleidung	Aluminium	JT4-ST3-3-4,8x35	-	-
L Holzbekleidung	Holz	SH3-S-4,0xLänge	-	-	
		SH3-S-5,0xLänge	-	-	

wird noch übersetzt



René Waurick  
**Branch office Dresden**

Breitscheidstraße 45  
D-01156 Dresden-Cossebaude  
phone +49 351 4 53 67-0  
fax +49 351 4 53 67-23

mobile +49 163 5 29 08 40  
e-mail: rwaurick@ejot.de



Wolfgang Ostermann  
**Branch office Unna**

Max-Planck-Straße 7a  
D-59423 Unna  
phone +49 2303 9 86 86-0  
fax +49 2303 9 86 86-90

mobile +49 163 5 29 08 34  
e-mail: wostermann@ejot.de



Dipl.-Ing. Henry Püls  
**Sales office Magdeburg/Berlin**

Kehrigker Dorfstraße 13  
D-15859 Storkow, Kehrigk  
phone +49 33678 6 27 05  
fax +49 33678 6 27 07

mobile +49 163 5 29 08 36  
e-mail: hpuels@ejot.de



Hans Alber  
**Branch office Stuttgart**

Siemensstraße 8  
D-74385 Pleidelsheim  
phone +49 7144 88 74-0  
fax +49 7144 88 74-22

mobile +49 163 5 29 08 31  
e-mail: halber@ejot.de



Helmut Schäfer  
**Sales office Schwerin/Hamburg**

Werkstraße 709  
D-19061 Schwerin  
phone +49 385 66 29 47/48  
fax +49 385 66 29 43

mobile +49 163 5 29 08 39  
e-mail: helmut.schaefer@ejot.de



Hans-Joachim Ramel  
**Branch office Munich**

Bruckmannring 10  
D-85764 Oberschleißheim  
phone +49 89 31 57 25-6  
fax +49 89 31 57 25-70

mobile +49 163 5 29 08 37  
e-mail: hjramel@ejot.de



Stefan Meyer  
**Sales office Bremen**

Ziegelweg 26  
D-27777 Ganderkesee  
phone +49 4223 380-253  
fax +49 4223 380-267

mobile: +49 170 8 58 65 52  
e-mail: smeyer@ejot.de



Günter Triefellner  
**Branch office Munich**

Bruckmannring 10  
D-85764 Oberschleißheim  
phone +49 89 31 57 25-6  
fax +49 89 31 57 25-70

mobile +49 163 5 29 08 79  
e-mail: whofmann@ejot.de



Thomas Bauer  
**Sales office Bad Laasphe**

In der Stockwiese 35  
D-57334 Bad Laasphe  
phone +49 2752 908-0  
fax +49 2752 908-731

mobile +49 163 5 29 07 42  
e-mail: tbauer@ejot.de



Daniel Gerstner  
**Sales office Nürnberg**

Ansbacher Straße 123  
D-90449 Nürnberg  
phone +49 911 6 80 98 72  
fax +49 911 6 80 98 73

mobile +49 163 5 29 09 73  
e-mail: dgerstner@ejot.de



Bernard Tröger  
**Branch office Unna**

Max-Planck-Straße 7a  
D-59423 Unna  
phone +49 2303 9 86 86-0  
fax +49 2303 9 86 86-90

mobile +49 163 5 29 08 80  
e-mail: btroeger@ejot.de



Dipl.-Ing. Jürgen Pfannstiel / Jürgen Stumpe  
**Sales office Tambach-Dietharz**

Im Grund 2  
D-99897 Tambach-Dietharz  
phone +49 36252 3 22 69  
fax +49 36252 3 22 47

mobile +49 163 5 29 08 35 / +49 163 5 29 08 72  
e-mail: jpfannstiel@ejot.de / jstumpe@ejot.de

 **AUSTRIA**  
EJOT Austria GmbH & Co KG  
Grazer Vorstadt 146  
A-8570 Voitsberg  
Tel. +43 (31 42) 2 76 00-0  
Fax +43 (31 42) 2 76 00-30  
e-mail: info@ejot.at  
Internet: www.ejot.at

 **BALTIC STATES**  
UAB EJOT Baltic  
Titnago g. 19  
LT-02300 Vilnius  
Tel. +370 (5) 23 11-437  
Fax +370 (5) 23 11-439  
e-mail: info@ejot.lt

 **BENELUX**  
EJOT Benelux bvba / sprl  
Moerbroek 2-B  
B-2270 Herenthout  
Tel. +32 (014) 86 82 51  
Fax +32 (014) 86 82 71  
e-Mail: info@ejot.be  
Internet: www.ejot.be

 **BULGARIA**  
EJOT Bulgaria EOOD & Co. KD  
Aleksandar Stamboliyski Blvd. 205  
- Building B, office 326 -  
BG-1309 Sofia  
Tel. +359 2 812 6569  
Fax +359 2 812 6569  
e-mail: mail@ejot.bg

 **BOSNIA AND HERZEGOVINA**  
EJOT d.o.o. Sarajevo  
Rajlovačka b.b.  
BiH-71000 Sarajevo  
Tel. +387 33 769 275  
Fax +387 33 769 276  
e-mail: info@ejot.ba

 **CROATIA**  
EJOT Spojna Tehnika d.o.o.  
Franje Lučića 23/3  
HR-10090 Zagreb  
Tel. +385 (1) 3 49 86 12  
Fax +385 (1) 3 49 89 63  
e-mail: ejot@ejot.hr

 **CZECH REPUBLIC**  
EJOT CZ, s.r.o.  
Zděbradská 65  
CZ-25101 Říčany-Jažlovice  
Tel. +420 (3 23) 63 78 11  
Fax +420 (3 23) 63 78 18  
e-mail: info@ejot.cz  
Internet: www.ejot.cz

 **DENMARK**  
EJOT Danmark ApS  
Industrisvinget 8  
DK-4683 Rønnede  
Tel. +45 (56) 39 08 42  
Fax +45 (56) 39 91 06  
e-mail: info@ejot.dk  
Internet: www.ejot.dk

 **FRANCE**  
EJOT France S.A.R.L.  
Z.I. rue du Climent  
F-67220 Villé  
Tel. +33 388.58.92.00  
Fax +33 388.58.92.01  
e-mail: info@ejot.fr  
Internet: www.ejot.fr

 **GERMANY**  
EJOT Baubefestigungen GmbH  
In der Stockwiese 35  
D-57334 Bad Laasphe  
Tel. +49 (27 52) 9 08-0  
Fax +49 (27 52) 9 08-7 31  
e-mail: bau@ejot.de  
Internet: www.ejot.de

 **HUNGARY**  
EJOT Hungária Kft.  
Ócsai út 1-3  
H-1239 Budapest  
Tel. +36 1 289 3090  
Fax +36 1 289 3091  
e-mail: ejot@ejot.hu  
Internet: www.ejot.hu

 **ITALY**  
EJOT Italia srl.  
Via Migliarone, n. 21/bis  
I-10091 Alpignano-Torino  
Tel. +39 (011) 9 68 29 00  
Fax +39 (011) 9 78 67 41  
e-mail: agranero@ejot.it  
Internet: www.ejot.it

 **NORWAY**  
EJOT Festesystem A/S  
Aslakveien 20A  
N-0701 Oslo  
Tel. +47 (23) 25 30 40  
Fax +47 (23) 25 30 41  
e-mail: festesystem@ejot.no  
Internet: www.ejot.no

 **POLAND**  
EJOT Polska  
Spółka z ograniczoną  
odpowiedzialnością Spółka  
komandyto  
Ul. Jeżowska 9  
PL-42-793 Ciasna  
Tel. +48 (34) 3 51 06 60  
Fax +47 (23) 3 53 54 10  
e-mail: ets@ejot.pl  
Internet: www.ejot.pl

 **ROMANIA**  
EJOT România S.R.L.  
Sos. Bucuresti-Pitesti nr.161 bis  
RO-117715 Stefanesti  
Tel. +40 (248) 22 38 86  
Fax +40 (248) 22 38 87  
e-mail: info@ejot.ro

 **RUSSIA**  
OOO EJOT Wostok  
Chlrkutskaya ul. 11/17, office 705  
RUS-107241, Moskau  
Tel. +7 (4 95) 663 88 49  
Fax +7 (4 95) 663 88 48  
e-mail: info@ejot.ru  
Internet: www.ejot.ru

 **SERBIA**  
EJOT Tehnika spajanja d.o.o.  
Autoput Beograd-Novi Sad 296X  
SCG-Serbia, 11080 Zemun  
Tel. +381 (11) 848 60 82  
Fax +381 (11) 848 60 82  
e-mail: info@ejot.rs

 **SLOVAKIA**  
EJOT Slovakia, s.r.o.  
Juzná trieda 82 (Areál VSS)  
SK-04001 Košice  
Tel. +4 21 (55) 6 22 17 60  
Fax +4 21 (55) 6 78 09 57  
e-mail: info@ejot.sk  
Internet: www.ejot.sk

 **SPAIN**  
EJOT Ibérica S. L.  
Pol. P 29 - C/ Azuela 78, nave 4  
E-28400 Collado Villalba (Madrid)  
Tel. +34 (91) 286 1020  
Fax +34 (91) 286 1021  
e-mail: info@ejot.es  
Internet: www.ejot.es

 **SWEDEN**  
EJOT & AVDEL System AB  
Santagsvägen 9  
S-70236 Örebro  
Tel. +46 (19) 20 65 00  
Fax +46 (19) 20 65 14  
e-mail: info@ejot-avdel.se  
Internet: www.ejot-avdel.se

 **SWITZERLAND**  
EJOT Schweiz AG  
Uttwiler Straße 3  
CH-8580 Dozwil  
Tel. +41 (71) 4 14 52 22  
Fax +41 (71) 4 14 52 50  
e-mail: info@ejot.ch

 **TURKEY**  
EJOT Tezmaç  
Cebeci Cad. No. 84  
TR-34100 Küçükköy-Istanbul  
Tel. +90 (2 12) 5 38 00 01  
Fax +90 (2 12) 5 38 00 93  
e-mail: info@ejot-tezmaç.com  
Internet: www.ejot-tezmaç.com

 **UNITED ARAB EMIRATES**  
EJOT Middle East FZE  
Sharjah Airport International  
Freezone  
P.O. Box 120588 Sharjah  
United Arab Emirates  
Tel. +971 6-55797-70  
Fax +971 6-55797-75  
e-mail: mexner@ejot.ae  
Internet: www.ejot.ae

 **UNITED KINGDOM**  
EJOT U.K. Ltd.  
Hurricane Close  
Sherburn Enterprise Park  
Sherburn-in-Elmet  
GB-Leeds LS25 6PB  
Tel. +44 (19 77) 68 70 40  
Fax +44 (19 77) 68 70 41  
e-mail: info@ejot.co.uk  
Internet: www.ejot.co.uk

For all other countries,  
please contact our  
headquarters in Germany,  
EJOT Baubefestigungen GmbH.