

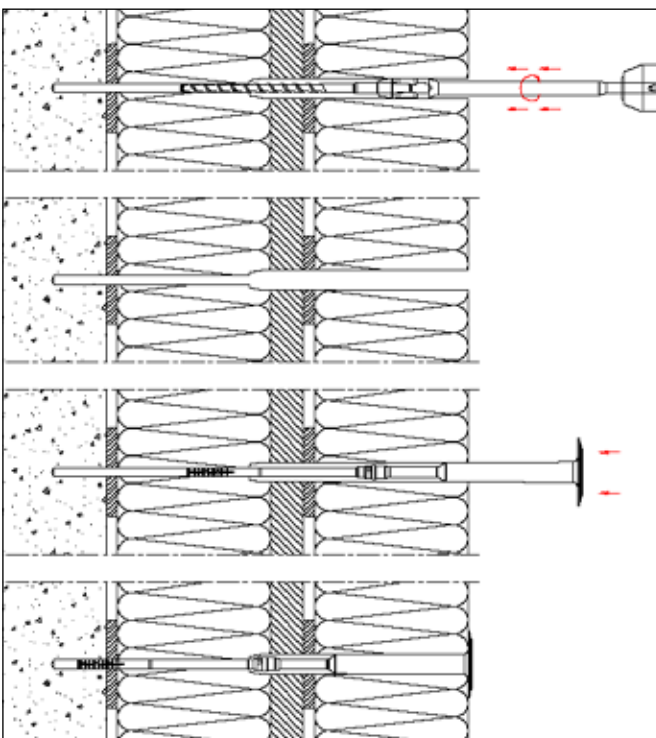
## EJOT drillIX

Specifically designed drill extension for use with short hard-metal hammer drills (EJOT drill) with cone adaptor

EJOT tools



### Installation:



### EJOT drillIX - save drilling costs!

Due to increasingly thicker insulating materials and renovations of existing External Thermal Insulation Composite Systems, longer and more expensive drills are needed.

With the specifically designed drill extension EJOT drillIX and the coordinated hard metal hammer drill, the EJOT drill, you can decrease tooling costs.

The combination of EJOT drillIX with EJOT drill can lower your drill costs by 20% to 40% from anchor lengths of 155 mm upwards.

The new EJOT drill, in effective lengths of 100, 150 and 250 mm, also features a long service life in hard building material.

## EJOT drillIX

Specifically designed drill extension for use with short hard-metal hammer drills (EJOT drill) with cone adaptor

EJOT tools

### Advantages:

- ❑ Decreased drilling costs when using anchors longer than 155 mm
- ❑ Improved transfer of the hammer impulse from the hammer drill over the drill extension
- ❑ Easier installation of additional layers of External Thermal Insulation Composite Systems
- ❑ The geometry of the drill extension expands the old render layer which facilitates anchor installation

### Technical data

- ❑ Drill diameter:  
EJOT drill: Ø 8 mm  
EJOT stepdrill: Ø 8 mm - Ø 19 mm

### EJOT hard metall hammer drill



### Product range EJOT drillIX drill extension

Product name and total length (mm)	Product code	Packaging unit (pieces)
EJOT drillIX 200	9151 950 001	1
EJOT drillIX 270	9151 950 002	1
EJOT drillIX spare kit	9151 950 003	3

### Product range EJOT hard metal hammer drill

Product name and use length (mm)	Product code	Packaging unit (pieces)
EJOT drill 100	9200 080 100	10
EJOT drill 150	9200 080 150	10
EJOT drill 250	9200 080 310	10
EJOT stepdrill 150	9200 080 109	10

### EJOT stepdrill



# EJOT drillX

Specifically designed drill extension for use with short hard metal hammer drills (EJOT drill) with cone adaptor

## Selection matrix for drill tools „additional layers“

Thickness new systems incl. adhesive (mm)		Thickness old system incl. tolerance compensation and render (mm)						
		40	50	60	70	80	90	100
50	surface fixed installation	150	200	200	100	100	100	100
		200	100	100	100	100	100	100
90	countersunk and surfaced fixed installation	100	100	100	100	100	100	100
110		100	100	100	100	100	100	100
130		100	100	100	100	100	100	100
150		100	100	100	100	100	100	100
170		100	100	100	100	100	100	100
190		100	100	100	100	100	150	150
210		100	100	100	150	150	150	150
230		100	150	150	150	150	150	150
250		150	150	150	150	150	250	250
270		150	150	150	250	250	250	250
290	150	250	250	250	250	250	250	

The allowed thickness of the new system is stated in the valid system approval.

- Effective length SDS hammer drill
- Effective length in combination with 200 mm drill extension
- Effective length in combination with 270 mm drill extension
- For thick old render systems use conical stepdrill in combination with the 200 mm drill extension if necessary

## Respective anchor lengths - use categories A, B, C, D

Thickness new systems incl. adhesive (mm)	Thickness old system incl. tolerance compensation and render (mm)						
	40	50	60	70	80	90	100
50	115	135	135	155	155	175	175
70	135	155	155	175	175	195	195
90	155	175	175	195	195	215	215
110	175	195	195	215	215	235	235
130	195	215	215	235	235	255	255
150	215	235	235	255	255	275	275
170	235	255	255	275	275	295	295
190	255	275	275	295	295	315	315
210	275	295	295	315	315	335	335
230	295	315	315	335	335	355	355
250	315	335	335	355	355	375	375
270	335	355	355	375	375	395	395
290	355	375	375	395	395	415	415

## Selection matrix for drill tools „large insulation thicknesses“

Insulation thickness (mm)	Effective length with possible tolerance compensation (adhesive and old or surfacing plaster respectively), (mm)				
	10	30	50	70	90
60*)	100	100	150	100	100
80	100	150	100	100	100
100	150	100	100	100	100
120	100	100	100	100	100
140	100	100	100	100	100
160	100	100	100	100	100
180	100	100	100	100	100
200	100	100	100	100	150
220	100	100	100	150	150
240	100	100	150	150	150
260	100	150	150	150	250
280	150	150	150	250	250
300	150	150	250	250	250
320	150	250	250	250	250
340	250	250	250	250	250
360	250	250	250	250	
380	250	250	250		
400	250	250			
420	250				

\*) only surface fixed installation

- Effective length SDS hammer drill
- Effective length in combination with 200 mm drill extension
- Effective length in combination with 270 mm drill extension
- Stepdrill in combination with 200 mm drill extension

## Respective anchor lengths - use categories A, B, C, D

Insulation thickness (mm)	Effective length with possible tolerance compensation (adhesive and old or surfacing plaster respectively), (mm)				
	10	30	50	70	90
60*)	115	115	135	155	175
80	115	135	155	175*)	195*)
100	135	155	175	195	215*)
120	155	175	195	215	235
140	175	195	215	235	255
160	195	215	235	255	275
180	215	235	255	275	295
200	235	255	275	295	315
220	255	275	295	315	335
240	275	295	315	335	355
260	295	315	335	355	375
280	315	335	355	375	395
300	335	355	375	395	415
320	355	375	395	415	435
340	375	395	415	435	455
360	395	415	435	455	
380	415	435	455		
400	435	455			
420	455				

\*) only surface fixed installation